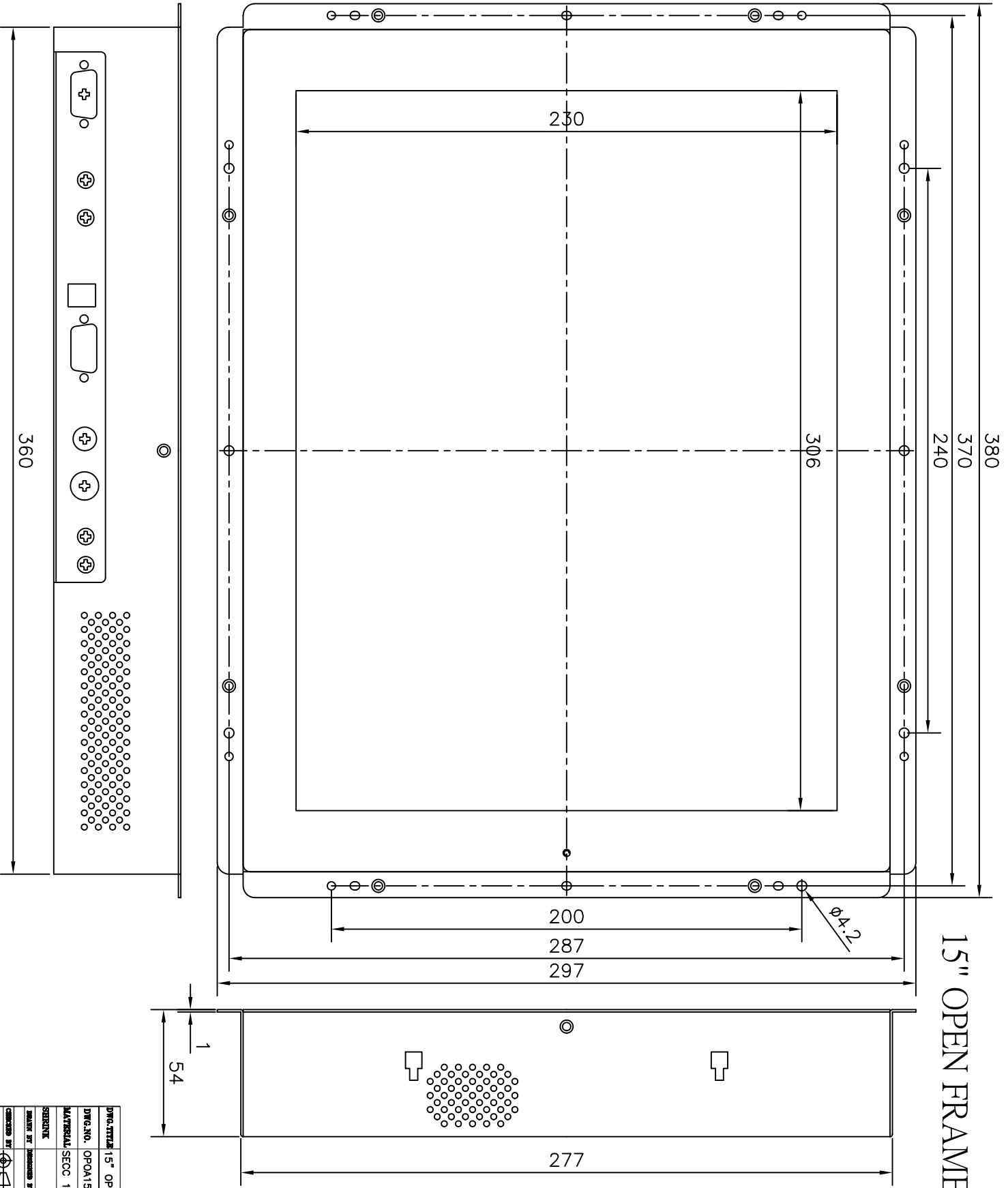




## OP-115 Specifications


<b>LCD Display</b>	<b>15" TFT Active Matrix Panel</b>
<b>Display Size</b>	<b>304.1 x 228.1 mm</b>
<b>Pixel Pitch</b>	<b>0.297 x 0.297 mm</b>
<b>Display Mode</b>	<b>VGA 640x350 (70Hz) VGA 720x400 (70Hz) VGA 640x480 (60/72/75Hz) SVGA 800x600 (60/72/75Hz) XGA 1024x768 (60/70/75Hz) Mac. 832x624 (75Hz)</b>
<b>Max. Resolution</b>	<b>1024x768</b>
<b>Contrast Ratio</b>	<b>350:1</b>
<b>Brightness</b>	<b>200 cd/m<sup>2</sup>(650mA) / 240 cd/m<sup>2</sup>(8mA)</b>
<b>Response Time</b>	<b>30mS (Tr + Tf)</b>
<b>Display Colors</b>	<b>16M (dithering)</b>
<b>Viewing Angle</b>	<b>+60° ~ -60°(L/R), +40° ~ -40°(U/D)</b>
<b>Input Signal</b>	
<b>Video</b>	<b>R.G.B Analog 0.7V Peak-to-Peak</b>
<b>Sync</b>	<b>TTL Positive or Negative</b>
<b>Signal Connector</b>	
	<b>15Pin Mini D-sub</b>
<b>Front Control</b>	<b>Power Switch, Menu, Select (Up, Down), Adjust (+, -)</b>
<b>OSD</b>	<b>Auto-Adjustment, Contrast, Brightness, Clock, Phase, H-Position, V-Position, Color Temperature</b>
<b>Plug &amp; Play</b>	<b>DDC1/2B</b>
<b>Optional</b>	<b>Touch Screen Video in: Pal/NTSC &amp; S-video/AV connector Audio System: 1W per channel</b>
<b>Power</b>	<b>Universal 90-240V, 12V/35W</b>
<b>Dimensions</b>	<b>380 x 297 x 54 mm</b>
<b>Weight (Net)</b>	<b>7 Kg</b>
<b>Certification</b>	<b>FCC-B, CE, UL</b>

# 15" OPEN FRAME OVERALL



REV.	DESCRIPTION	DATE

Dwg. Title: 15" OPEN FRAME ACER X2 OVERALL	
DWG. NO.	OPOA1502-A
MATERIAL	SECC 1T
SHEETING	SCALE: A
ISSUED BY	DATE: 01/09/25
SCALE	1:1
DATE	01/09/25


**SINRG TECHNOLOGY CO., LTD.**  
 TEL: 886-2-652-1166  
 FAX: 886-2-652-1145  
 E-MAIL: info@sinrg.com.tw  
 ADDRESS: NO. 10, LANE 13, SECTION 3, HSIANG-SUNG ROAD, TAINAN CITY, TAIWAN, R.O.C.